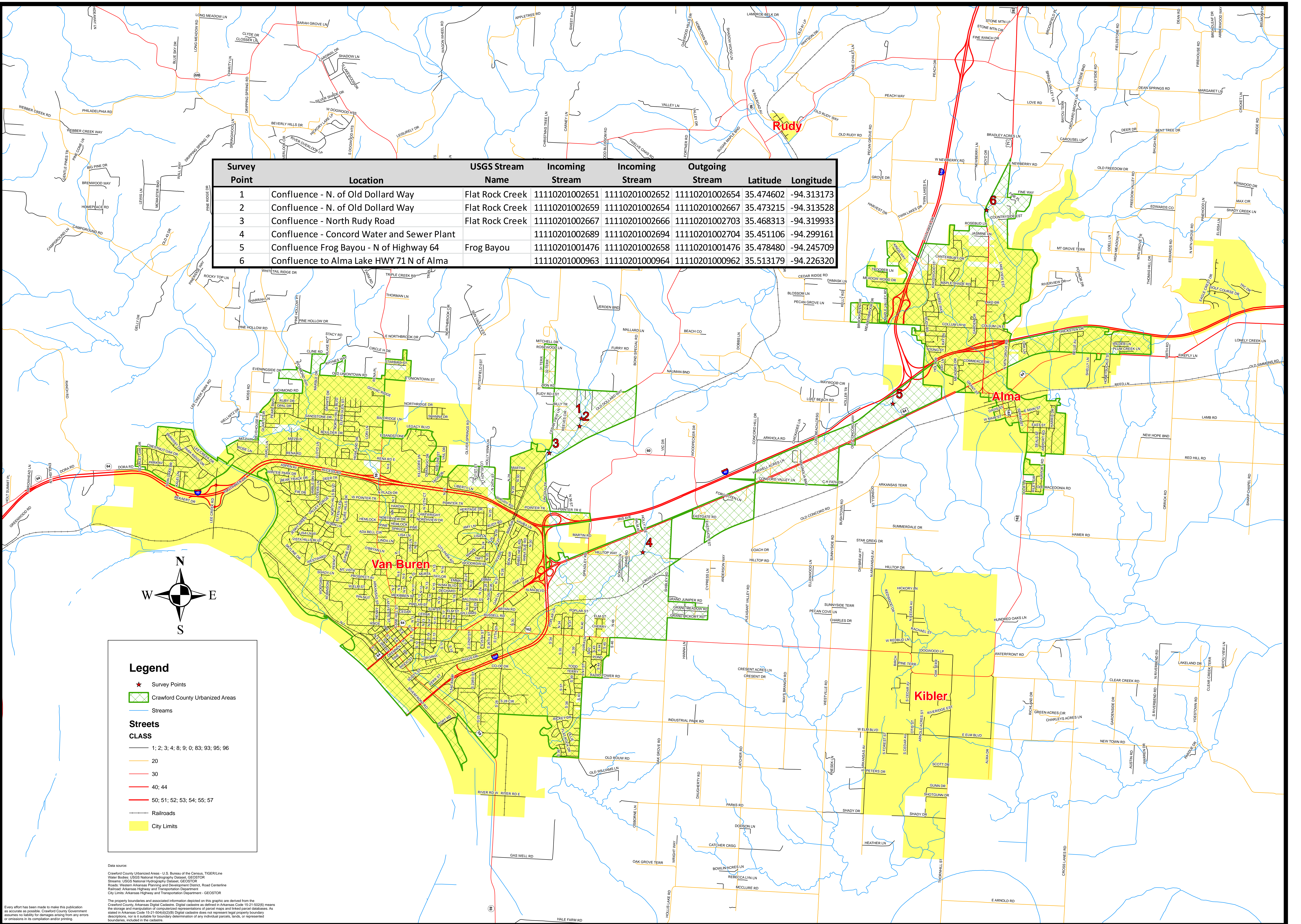


CRAWFORD COUNTY, ARKANSAS

STORMWATER POLLUTION PREVENTION PLAN

Prepared and distributed by the
Crawford County Assessor's Office
Printed Wednesday, July 24, 2013 1:13:22 PM

Survey Point	Location	USGS Stream Name	Incoming Stream	Incoming Stream	Outgoing Stream	Latitude	Longitude
1	Confluence - N. of Old Dollard Way	Flat Rock Creek	11110201002651	11110201002652	11110201002654	35.474602	-94.313173
2	Confluence - N. of Old Dollard Way	Flat Rock Creek	11110201002659	11110201002654	11110201002667	35.473215	-94.313528
3	Confluence - North Rudy Road	Flat Rock Creek	11110201002667	11110201002666	11110201002703	35.468313	-94.319933
4	Confluence - Concord Water and Sewer Plant		11110201002689	11110201002694	11110201002704	35.451106	-94.299161
5	Confluence Frog Bayou - N of Highway 64	Frog Bayou	11110201001476	11110201002658	11110201001476	35.478480	-94.245709
6	Confluence to Alma Lake HWY 71 N of Alma		11110201000963	11110201000964	11110201000962	35.513179	-94.226320



Data source:
Crawford County Urbanized Areas - U.S. Bureau of the Census, TIGER/Line
Water Bodies: USGS National Hydrography Dataset, GEOSTOR
Streams: USGS National Hydrography Dataset, GEOSTOR
Roads: Western Arkansas Planning and Development District, Road Centerline
Railroad: Arkansas Highway and Transportation Department
City Limits: Arkansas Highway and Transportation Department - GEOSTOR

The property boundaries and associated information depicted on this graphic are derived from the Crawford County, Arkansas Digital Cadastre. Digital cadastre as defined in Arkansas Code 15-21-502(b) means the storage and manipulation of computerized representations of parcel maps and related parcel databases. As stated in Arkansas Code 15-21-504(d)(2)(B) Digital cadastre does not represent legal property boundary descriptions, nor is it suitable for boundary determination of any individual parcels, lands, or represented boundaries, included in the cadastre.

Every effort has been made to make this publication as accurate as possible. Crawford County Government assumes no liability for damages arising from any errors or omissions in its compilation and/or printing.